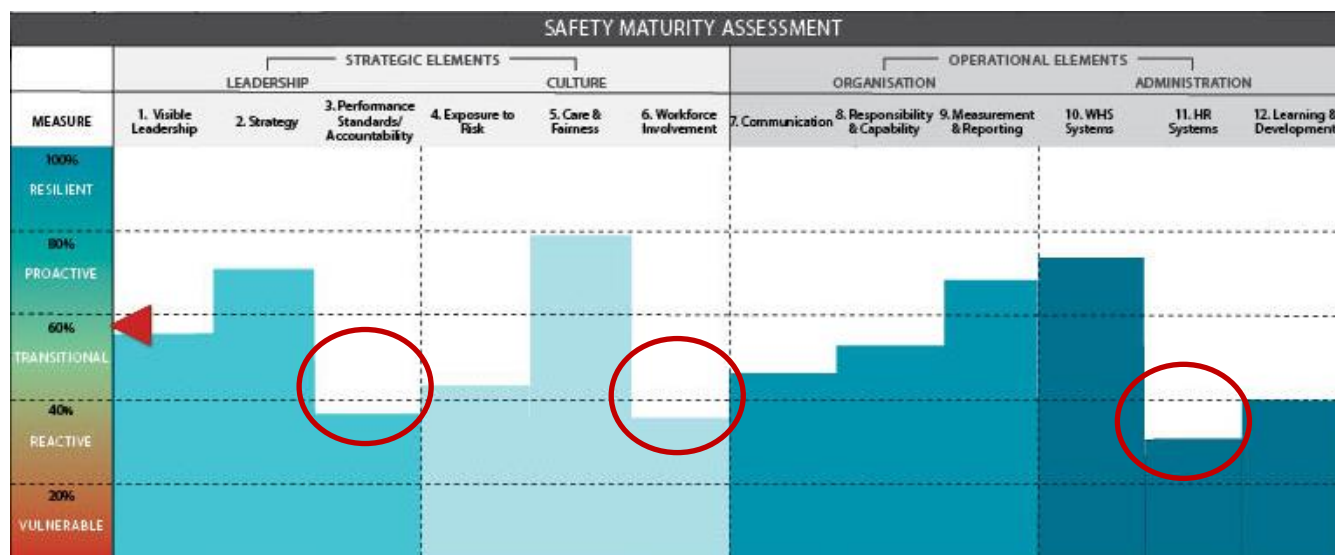


## Introduction & Overview

The Safety Maturity Assessment incorporates a comprehensive evaluation of all the factors affecting safety maturity within your organisation including behavioural, cultural, wellbeing and systems elements.

An experienced SafetyWorks consultant utilises a semi-quantitative safety maturity benchmarking tool to assess the status of safety processes and practices of your organisation against twelve key indicators of organisational safety performance.



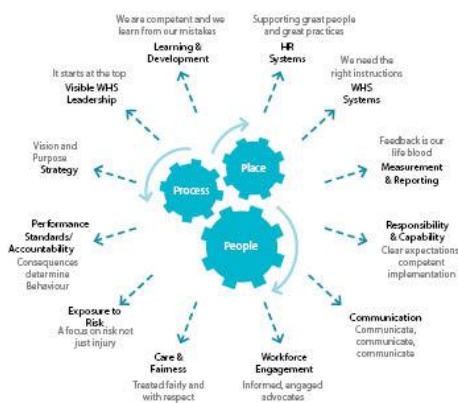
## Benefits

- Assists to prioritise what to focus on in order to achieve greatest impact.
- Provides insights into what best practice looks like for all factors affecting Safety Maturity; Systems/Culture/Behaviour/Wellbeing.
- Describes the gap between present and desired state semi-quantitative and qualitative manner.
- Allows for both criteria and norm based workplace health and safety (WHS) and wellbeing maturity comparisons through benchmark scores.
- Delivers WHS maturity insights to people who participate in the process through inbuilt coaching characteristic.
- An inbuilt coaching benefit that will provide HSW maturity insights to people who participate in the process.
- Guides improvement in WHS through expert recommendations and strategic planning.

## Key Steps

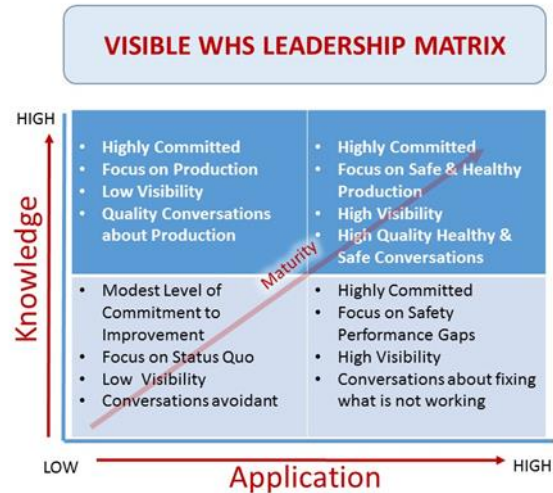
- 1. Planning Meeting** – Meet with key client stakeholders to plan and coordinate the Assessment processes.
- 2. Document Review** - Prior to the site visit SafetyWorks reviews organisational documentation so that an initial picture may be formed.
- 3. Site visit** - Experienced SafetyWorks consultants will conduct one on one and small group interviews with managers, supervisors, frontline workers and contractors at their place of work. They will review a cross-section of functions and observe key work behaviours and activities.
- 4. Report writing** - The report provides a rating for each element using a safety maturity benchmarking tool; highlighting what is working well and also opportunities for improvement. The report describes the present level of safety maturity as well as what could be achieved. This allows senior leaders in the participating organisation to choose the desired future state for each individual element.
- 5. Recommendations and strategic planning meeting** - SafetyWorks consultants will meet with nominated stakeholders to share our overall recommendations along with a strategic plan to leverage the findings of the report.

### Element Description



## Get in Touch!

Learn more about the Safety Maturity Assessment - please connect with us directly at [www.safetyworksgroup.com.au](http://www.safetyworksgroup.com.au) or, by telephone on (02) 4925 3147



## Maturity Assessment Process Outcomes

1. An executive scored summary document supported by a comprehensive report describing the findings and potential next steps
2. A facilitated debriefing session with the key stakeholders.
3. On site debriefing to the organisation on the outcomes of the report (optional).
4. Participation in strategy development meetings post report (optional).
5. Specific stakeholder debrief and strategy development meetings.
6. Comparison statistics to compare performance with other participating organisations.

